



GMT MONTHLY MEMBERSHIP PROGRESS REPORT

Results as of: 7/31/2019

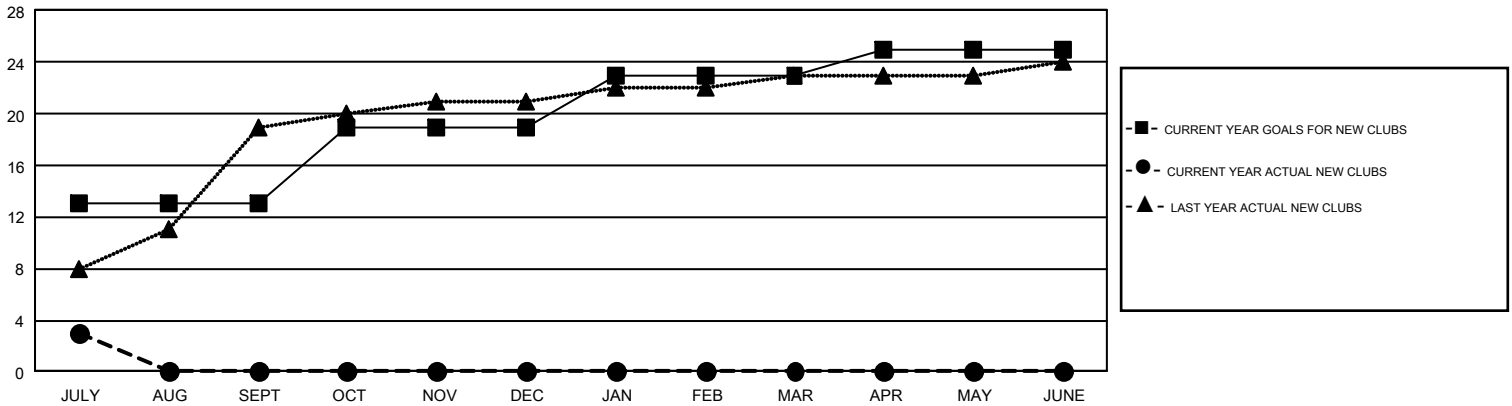
GMT Constitutional Area 6, Group O

GMT: OPEN

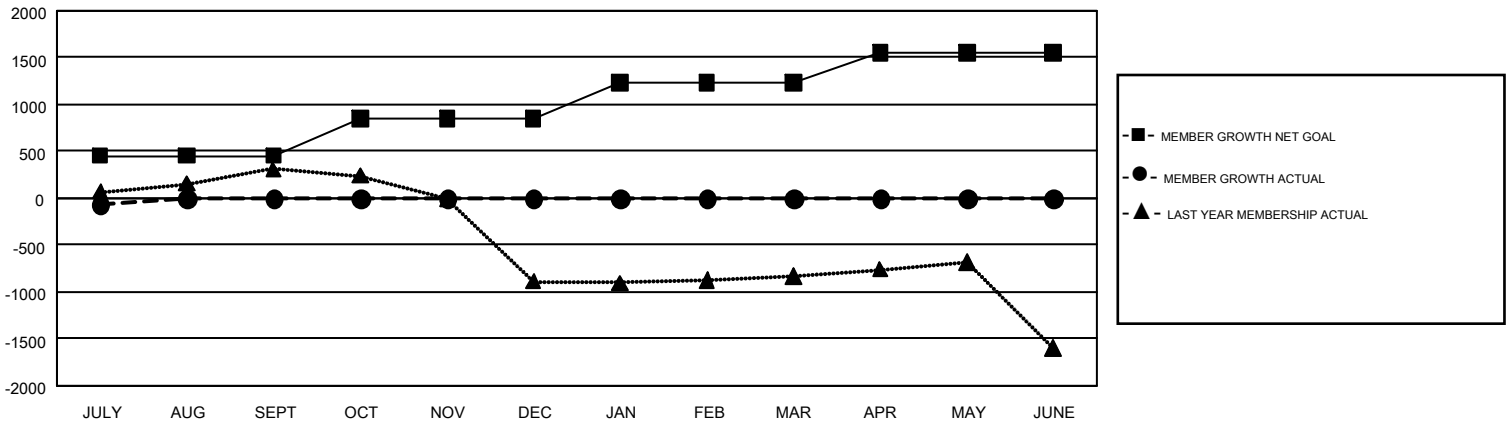
REPORT DOES NOT INCLUDE CLUBS IN UNDISTRICTED AREAS.

Clubs				Members			
RESULTS FOR 2019-2020				RESULTS FOR 2019-2020			
QUARTER	NEW CLUB GOAL	NEW CLUBS	DROPPED CLUBS	QUARTER	MEMBER GROWTH NET GOAL	MEMBER GROWTH ACTUAL	DROPPED MEMBERS ACTUAL (including transfers)
JULY/AUG/SEPT	13	3	0	JULY/AUG/SEPT	450	190	218
OCT/NOV/DEC	6	0	0	OCT/NOV/DEC	400	0	0
JAN/FEB/MAR	4	0	0	JAN/FEB/MAR	380	0	0
APR/MAY/JUNE	2	0	0	APR/MAY/JUNE	320	0	0

GOALS AND ACTUAL NEW CLUBS CUMULATIVE



GOALS AND ACTUAL MEMBERS CUMULATIVE



DROPPED CLUBS: 0	39 CLUBS OF 365 ADDED 1 OR MORE NEW MEMBERS	GENDER DISTRIBUTION MALE 10,659 (65.58%) FEMALE 5,595 (34.42%)
DROPPED MEMBERS DECEASED 2 CLUB CANCELLED 0 OTHER 216 <hr/> TOTAL 218	CLICK HERE FOR CUMULATIVE MEMBERSHIP DATA	TOTAL FAMILY UNIT MEMBERS 9,691 FAMILY MEMBERS PAYING HALF DUES 5,460